

# STPI INNOVATION TOWER BHUBANESWAR



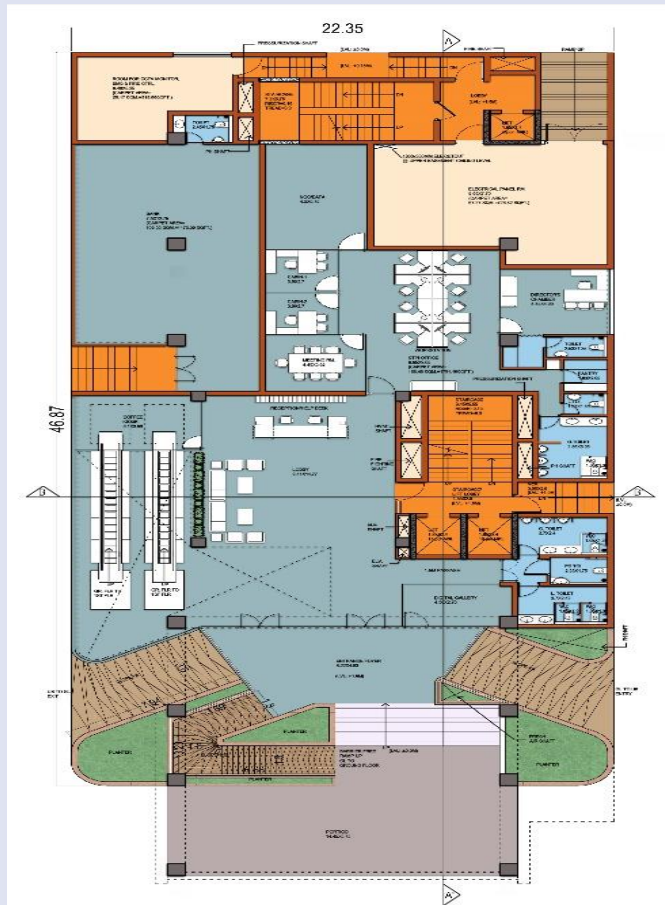
Image is 3D in nature.  
Actual image may differ.

## Space Details & Facilities

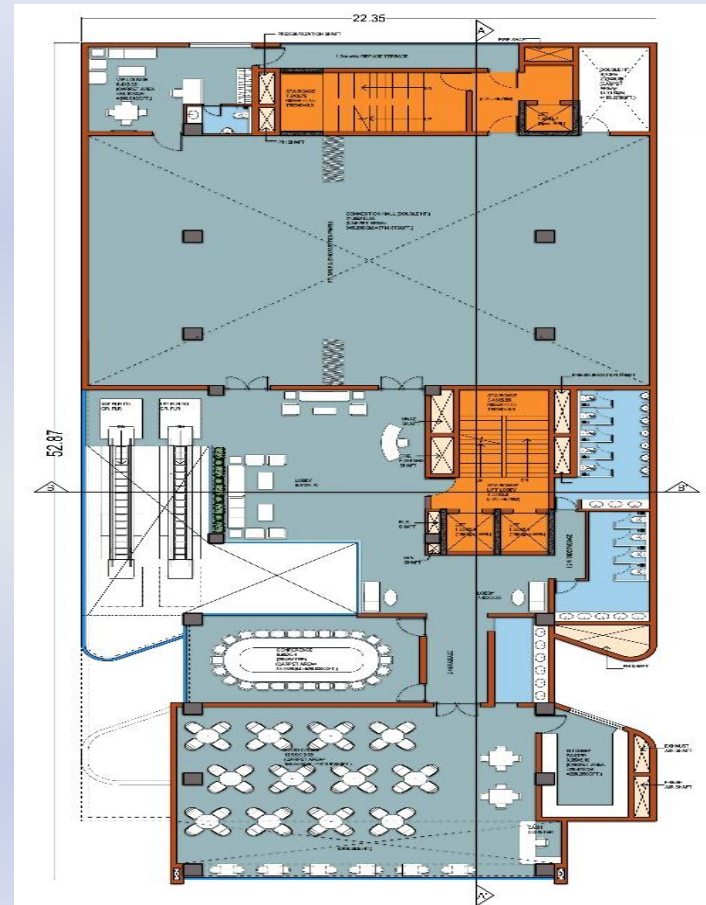
| Floor                | Area in sq. mt.                | Area (In Sq.ft.)  | Facilities/Services                           |
|----------------------|--------------------------------|-------------------|-----------------------------------------------|
| Lower Basement (B2)  | 1867.90 sqm                    | 20105.9           | Parking+Services                              |
| Upper Basement (B1)  | 1867.90 sqm                    | 20105.9           | Parking+Services                              |
| Ground Floor         | 1031.29 sqm                    | 11100.71          | STPI Office, Bank & Cafe                      |
| 1st Floor            | 977.08 sqm                     | 10517.2           | Convention Hall, Conference Hall & Food Court |
| 2nd Floor            | 555.23 sqm                     | 5976.44           | PnP Incubation & Co-Working Space             |
| 3rd Floor            | 1106.30 sqm                    | 11908.11          | Raw Incubation & DC Space                     |
| 4th Floor            | 781.14 sqm                     | 8408.12           | Raw Incubation                                |
| 5th Floor            | 652.15 sqm                     | 7019.68           | Raw Incubation                                |
| 6th Floor            | 652.15 sqm                     | 7019.68           | Raw Incubation                                |
| 7th Floor            | 652.15 sqm                     | 7019.68           | Raw Incubation                                |
| 8th Floor            | 707.60 sqm                     | 7616.54           | Raw Incubation                                |
| 9th Floor            | 707.60 sqm                     | 7616.54           | Raw Incubation                                |
| <b>Built-up Area</b> | <b>11,558.49 sqm</b>           | <b>124,414.55</b> |                                               |
| <b>Height</b>        | <b>39.90 Mtr. (130.90 ft.)</b> |                   |                                               |

## Facilities & Services

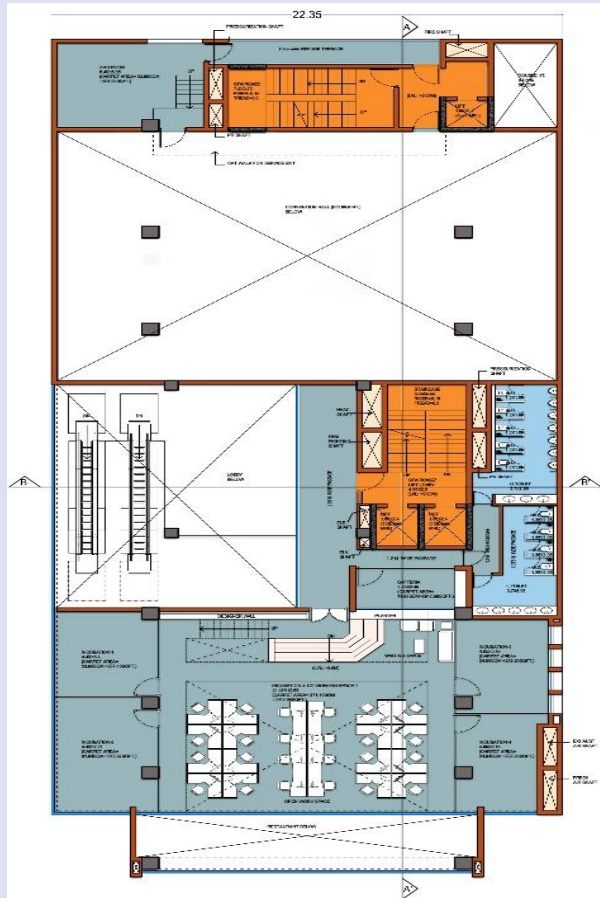
- STPI's Next Generation Incubation facility
- Semi furnished IT Space
- Plug & Play Modules and Raw IT Space
- Co-working Space for Start-ups
- Convention Hall
- High Speed Data Communication Facility
- Access to DC & Cloud Services
- VAPT Audit Services
- Project Management & Consultancy (PMC) Services
- Bank & ATM
- Conference Halls
- Access to Centre of Entrepreneurship (COE)
- Cafeteria/ Canteen
- Security (CCTV, ACCESS CONTROL & OTHER MODERN SECURITY)
- Mentoring & Promotional support for Tech Start-ups
- STP/EHTP Scheme Regulatory support



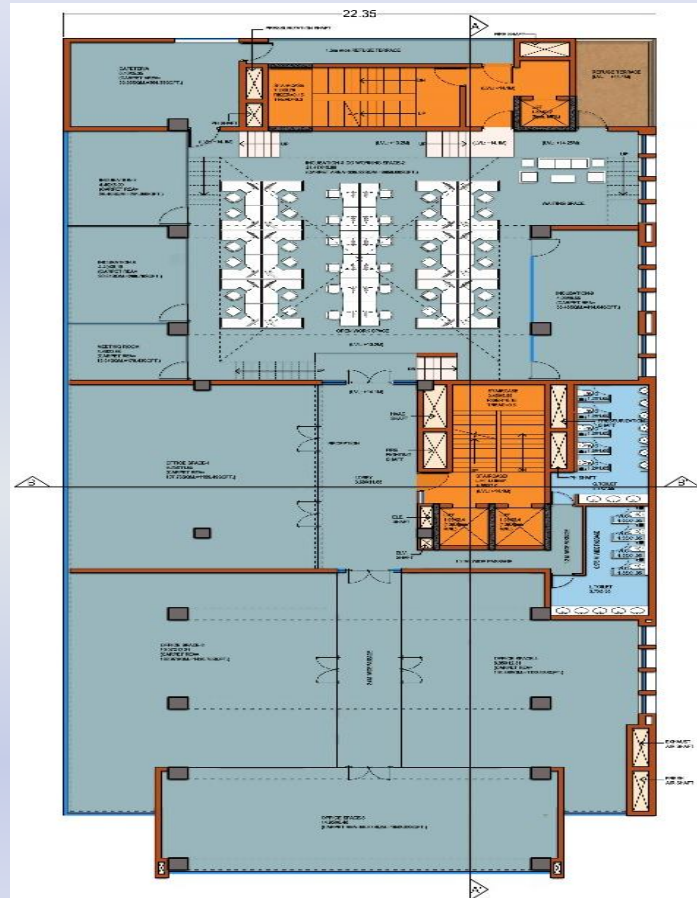
**GROUND FLOOR PLAN**  
 BUILT UP AREA=1031.29 SQM.  
 F.A.R. AREA= 1031.29 SQM.



**FIRST FLOOR PLAN**  
 BUILT UP AREA=977.08 SQM.  
 F.A.R. AREA= 977.08 SQM.



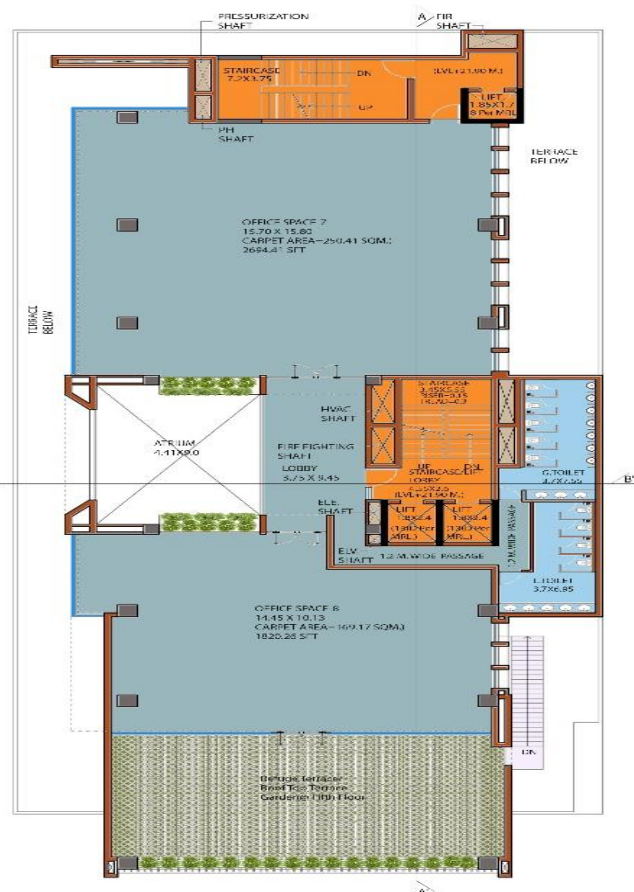
**SECOND FLOOR PLAN**  
 BUILT UP AREA=555.23 SQM.  
 F.A.R. AREA= 555.23 SQM.



**THIRD FLOOR PLAN**  
 BUILT UP AREA=1106.30 SQM.  
 F.A.R. AREA= 1106.30 SQM.

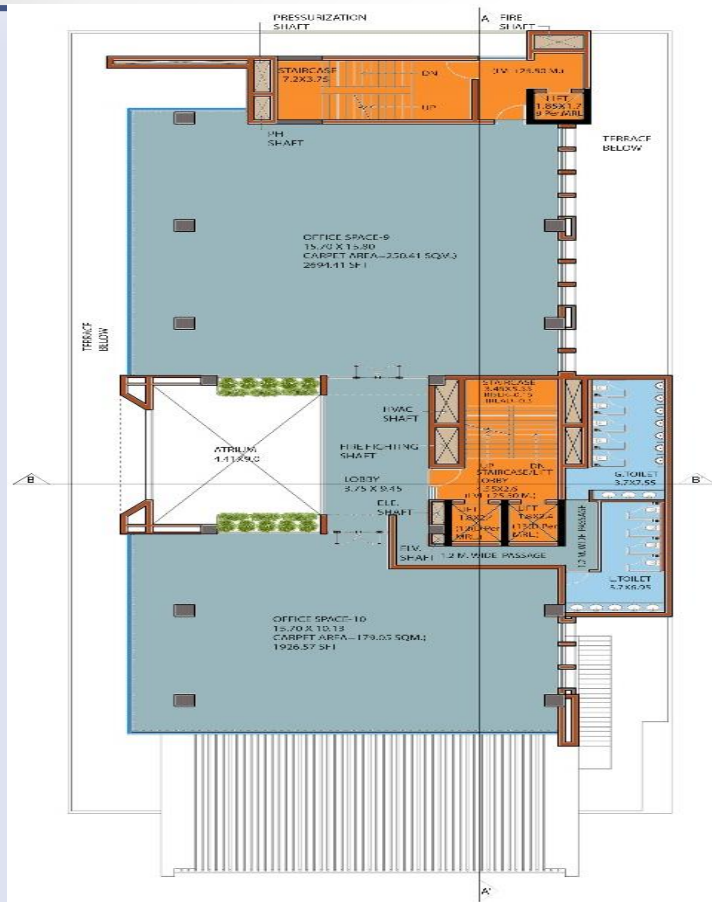


**FOURTH FLOOR PLAN**  
 BUILT UP AREA=781.14 SQM.  
 F.A.R. AREA= 781.14 SQM.

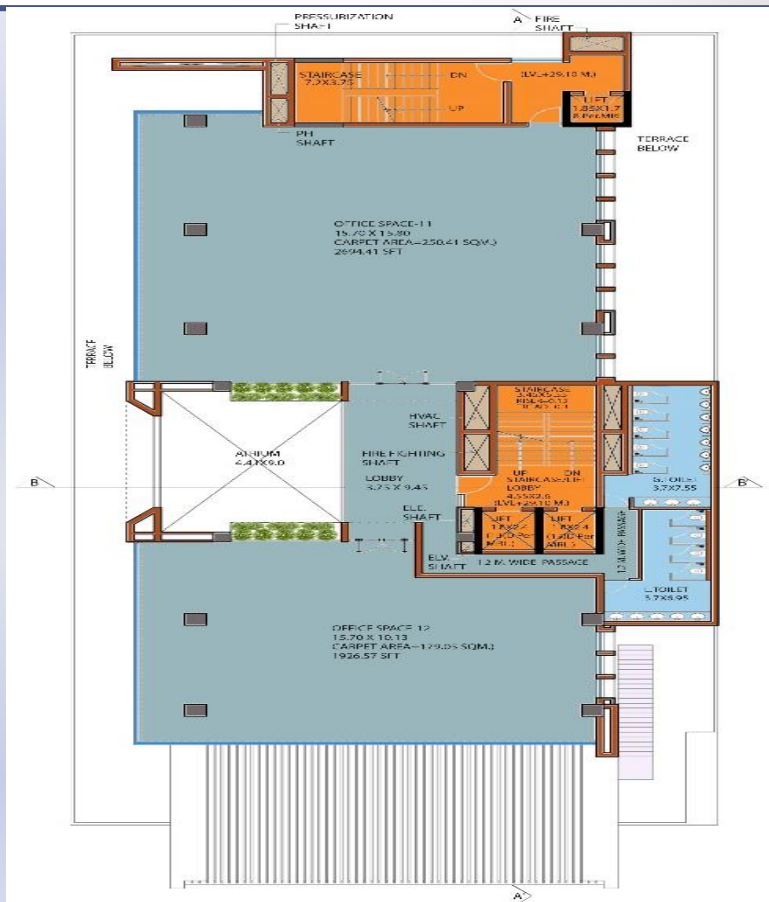


**FIFTH FLOOR PLAN**  
 BUILT UP AREA=652.15 SQM.  
 F.A.R. AREA= 652.15 SQM.

# Drawings:



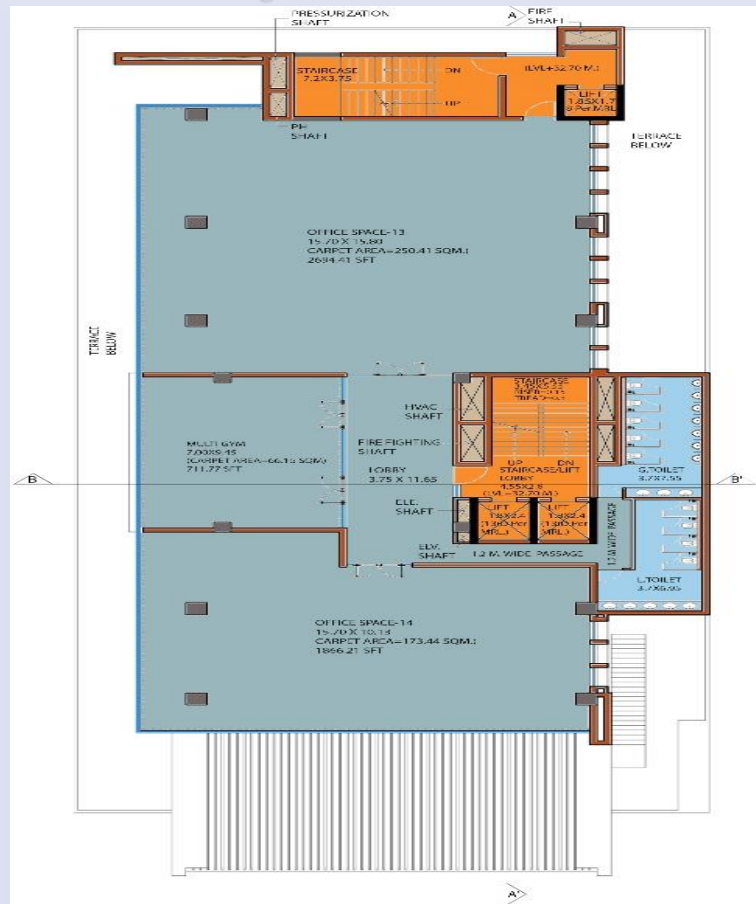
**SIXTH FLOOR PLAN**  
 BUILT UP AREA=652.15 SQM.  
 F.A.R. AREA= 652.15 SQM.



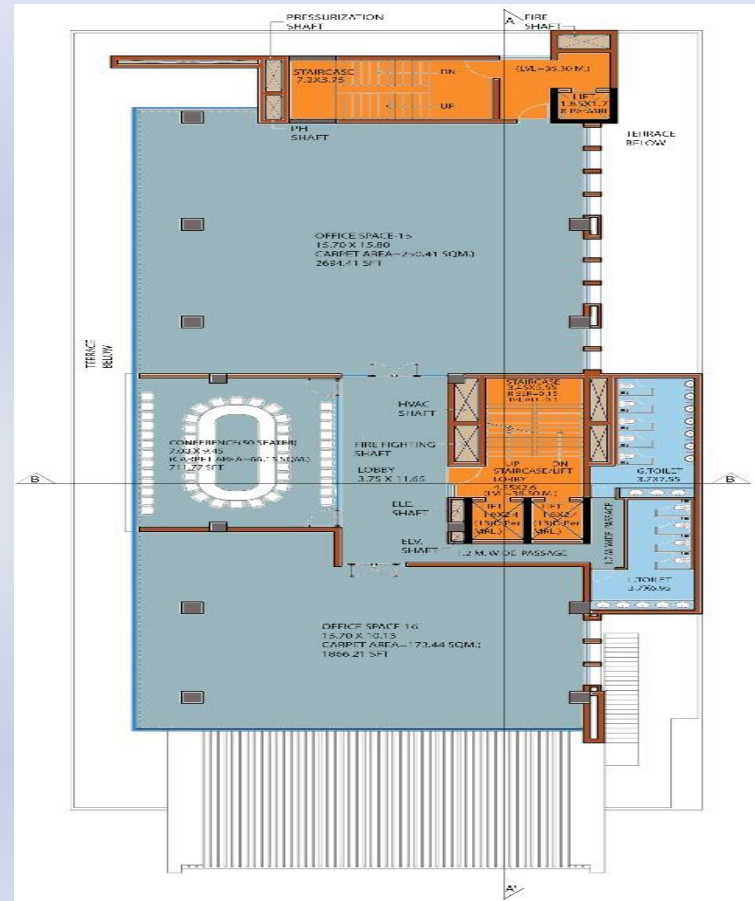
**SEVENTH FLOOR PLAN**  
 BUILT UP AREA=652.15 SQM.  
 F.A.R. AREA= 652.15 SQM.

Courtesy

# Drawings:



**EIGHTH FLOOR PLAN**  
 BUILT UP AREA=707.60 SQM.  
 F.A.R. AREA= 707.60 SQM.



**NINTH FLOOR PLAN**  
 BUILT UP AREA=707.60 SQM.  
 F.A.R. AREA= 707.60 SQM.

**For further details, please contact**

**Software Technology Parks of India,  
(Ministry of Electronics and Information Technology, Govt. of India),  
STPI ELITE Building, Plot no. 2/ A, IDCO Industrial Area, Gothapatna,  
Post- Malipada, District-Khurda,  
Bhubaneswar, Odisha-751003**

**E-mail :: [dir.bbioffice@stpi.in](mailto:dir.bbioffice@stpi.in)**

**Website :: <https://bhubaneswar.stpi.in>**